



KENTUCKY CLASSIC



KENTUCKY CLASSIC

Model number: 36TRU28724RH19

4 beds • 2 baths • 2016 sq.ft. • 28' width • 72' depth

Our home building facilities invest in continuous product and process improvements. Plans, dimensions, features, materials, specifications and availability are subject to change without notice or obligation. Renderings and floor plans are representative likenesses of our homes and may differ from the actual homes. We invite you to tour a Home Center near you and inspect the highest value in quality housing available or call (270) 769-9433 to speak with a Home Consultant. Copyright 2017, CMH. All rights reserved.

<https://www.etownoakwood.com>

OAKWOOD HOMES- ELIZABETHTOWN

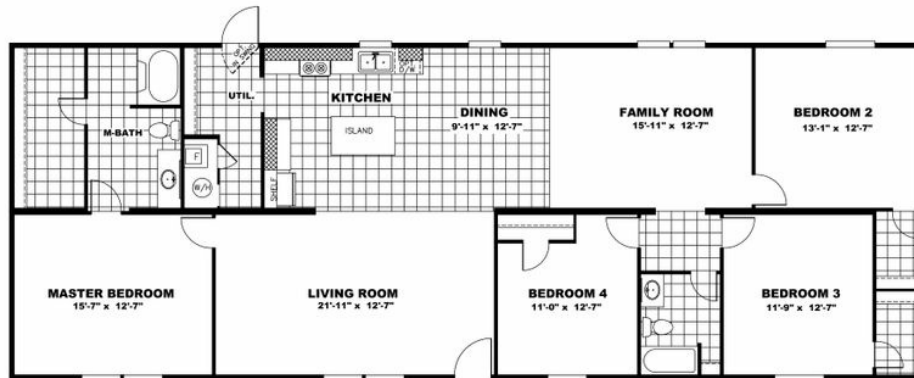
7120 N. DIXIE HWY
ELIZABETHTOWN, KY 42701

Monday - Thursday: 9am to 6pm
Friday: 9am to 6pm
Saturday: 9am to 5pm
Sunday: Closed

(270) 769-9433



KENTUCKY CLASSIC



KENTUCKY CLASSIC Model number: 36TRU28724RH19

4 beds • 2 baths • 2016 sq.ft. • 28' width • 72' depth

Our home building facilities invest in continuous product and process improvements. Plans, dimensions, features, materials, specifications and availability are subject to change without notice or obligation. Renderings and floor plans are representative likenesses of our homes and may differ from the actual homes. We invite you to tour a Home Center near you and inspect the highest value in quality housing available or call (270) 769-9433 to speak with a Home Consultant. Copyright 2017, CMH. All rights reserved.

<https://www.etoakwood.com>

OAKWOOD HOMES- ELIZABETHTOWN

7120 N. DIXIE HWY
ELIZABETHTOWN, KY 42701

Monday - Thursday: 9am to 6pm
Friday: 9am to 6pm
Saturday: 9am to 5pm
Sunday: Closed

(270) 769-9433